

Factory Add: Mingcun Town, Pingdu City, Qingdao, China
Office Add: Floor 9, No.29 Capital International Center,
No.6 Changcheng South RD, Chengyang District, Qingdao, China

info@qihangtyre.com.cn
www.qihangtyre.com



 Facebook
Forerunner tyres

 LinkedIn
Forerunner tyres

BEYOND TRACKS

Design and manufacture
Off-the-road tyres for Agricultural,
Construction and Industrial operations.

ASTROAY
BEYOND TRACKS

ASTROAY
BEYOND TRACKS





TABLE OF CONTENTS

About ASTROAY(QIHANG)

ASTROAY' s 23 years footprints
Our value, vision and future
Our people, brands, and business
R&D concept and quality system
Products and solutions
Marketing, medias and customer communication

Construction and Industrial Tires Introduction

Our Culture and Standing

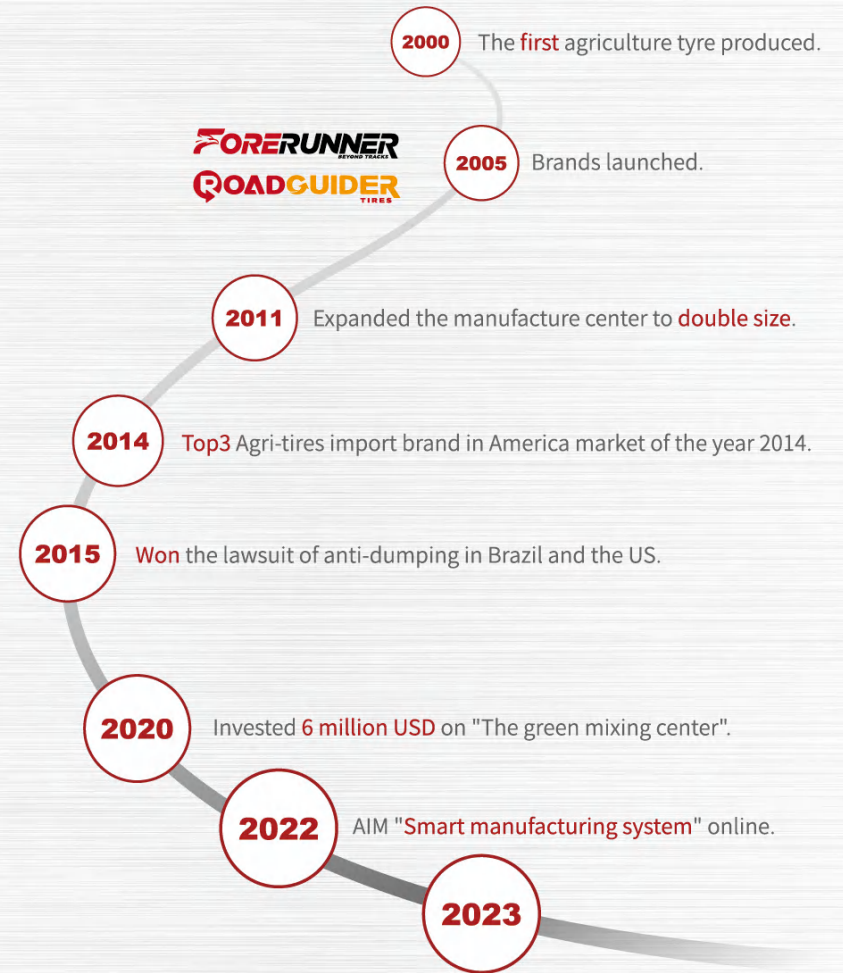
Awards and reputations
Business Map
Three Pillars Culture
Marketing Activities

Thank you For being with us For 23 years



The history of Astroay is one of entrepreneurship, innovation, and industrial upgrading. As the Agriculture and OTR tires supplier in the new economics, we experienced product iteration in various markets, new demand from customers, and challenges from rivals. All these make Astroay today.

Now we have the biggest "Green Mixing Plant" in north China which could produce 200,000 tons of material rubber and reduce the thousands of tons of emission of greenhouse gases. We have 1500 solutions for millions of end-users in 71 countries. Also now we have an excellent supply system for customers all around the world.



ABOUT ASTROAY



Our Brands



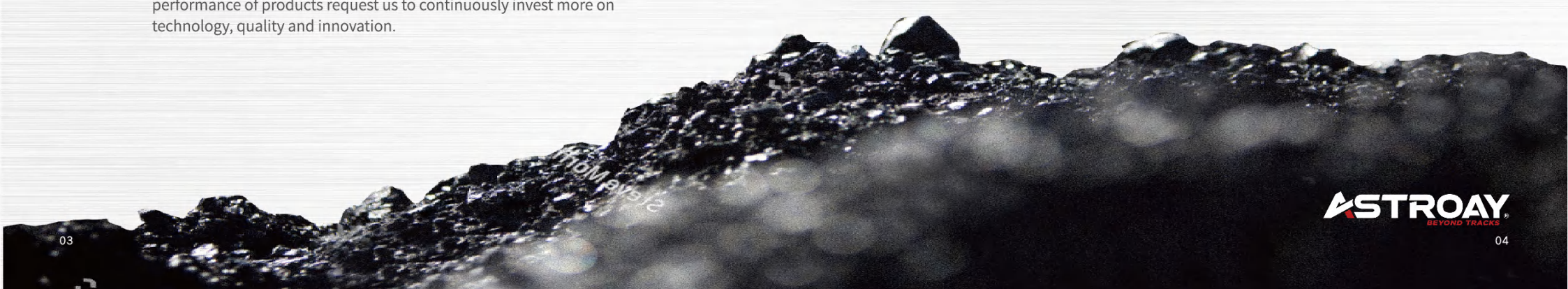
ASTROAY's 23 years footprints

Focusing on the agricultural and off-road tires, we have expanded business to 71 different countries all over the world. Following the vision of sustainability and innovation, we developed more than 1500 solutions to meet the customers' need. New founded raw material plants and assembly line can deliver the commitment of manufacturing and supply for partners and end-users in an excellent and efficient way.

Our vision and Future

At **ASTROAY**(Qihang tires), sustainability and innovation aren't only the enterprise's vision, but also a key method to our future. Since **ASTROAY** established in the beginning of the Millennium, we started the voyages of our pursuit for the sustainable and innovative solution for customers and industries. Our commitments to improve the safety, efficiency and performance of products request us to continuously invest more on technology, quality and innovation.

Manufacturing Base area	People	Business in	Offering	Annual Capacity
200,000 m'	600 Employees	71 Countries	1,500 Solutions	150 Million USD



Our value, vision and future



The first meaning of "**Beyond tracks**" is our off-road solutions range.

BEYOND TRACKS



"**Beyond tracks**" also indicates that we focus on all phases of tire design, development, and manufacture till application.



The implication of "**Beyond tracks**" is unique, exploratory, and off the existing tracks innovation.



R&D Concept

Sustainability Base

To pursue the sustainability is the base considering of our research and development. From the less soil compaction compounds design, to the reduced emission manufacturing process, we believe the productive harmony is the key to our future.



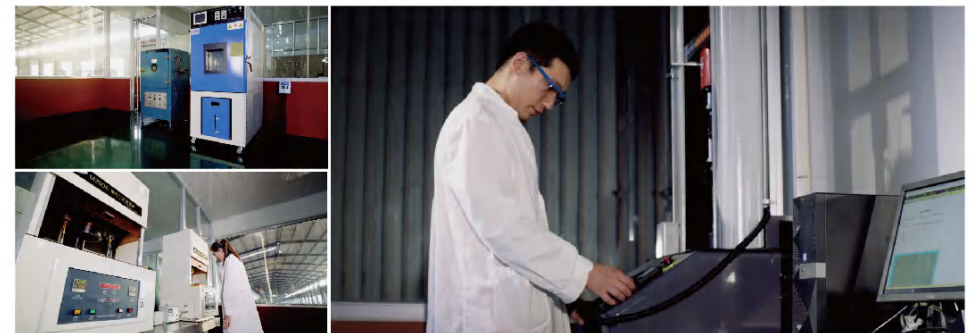
Selected Solutions

Thinking from the customer's point of view, standing in end-users' boots. We won't recommend products because of the most profit or easiest manufacturing, but rather our customers really need.



Performance Focused

The improvement of tires performance can keep your vehicles in good working condition at all times and improve work efficiency. Our work points are not only in the laboratory, but also in the customer's construction site, farmland, factory. We pay more attention to the performance of your tires and vehicles.



PRODUCT INTRODUCTION

Construction and Industrial tires

Focusing on Agricultural and off-the-road applying
ASTROAY'S TRACKS ARE COVERING EVERY
FARM FIELD AND CONSTRUCTION SITE.



Tractor with cultivator



ATV



Tractor with sprayer



Orchard Machinery



Tractor with trailer



Forklift



4WD Tractor



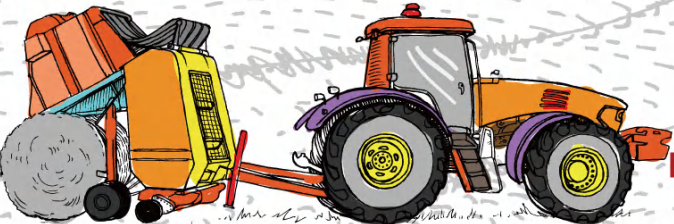
Loader



Backhoe Loader



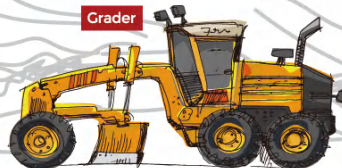
Skid Steer



Baler



Harvester



Grader

Construction and Industrial tires



Loader	Grader	Skid Steer	Forklift	Backhoe Loader / Agri-Industrial Tractor	Telehandler	Wheeled Excavator
QH811	QH807	SKS-1 SKS-6	QH201	QH631 SKS-1 QH601 QH607	QH880	QH107
QH812	QH808	SKS-2 SKS-7	QH202	QH632 SKS-6 QH602 QH608	QH806	QH108
QH815	QH809	SKS-3 SKS-8	QH207	QH633 QH603 QH608L		
		SKS-4 SKS-9	QH208	QH634 QH604 QH609		
		SKS-5		QH605		

LOADER



E-3/L-3 QH811



Optimized design for better performance



Improved compound

Brings excellent heat-building resistant ability Improve continuous operation and increase output.



The better traction

Big stagger lugs design provides powerful traction.



Longer Mileage

Thanks to unique compound and excellent rubber raw materials, the tire has better mileage and be friendly with environment.

E-3/L-3 QH812



Optimized design for better performance



Improved compound

Brings excellent heat-building resistant ability Improve continuous operation and increase output.



The better traction

Big stagger lugs design provides powerful traction.

L-5 QH815



Optimized design for better performance



Super deep tread

Brings better punch-resistance and wearing performance in tough working condition.



Cut resistance

The cut-resistant compound brings much more stability to the tire and makes the vehicle and driver always working in the safe status.



Longer Mileage

Thanks to unique compound and excellent rubber raw materials, the tire has better mileage and be friendly with environment.

GRADER



G-2/L-2 QH807



Better gripping, easy operation



Improved compound

Brings excellent heat-building resistant ability Improve continuous operation and increase output.



The better traction

Big stagger lugs design provides powerful traction.



Cut resistance

The cut-resistant compound brings much more stability to the tire and makes the vehicle and driver always working in the safe status.



G-2/L-2 QH808



Better gripping, easy operation



Improved compound

Brings excellent heat-building resistant ability Improve continuous operation and increase output.



The better traction

Big stagger lugs design provides powerful traction.



Cut resistance

The cut-resistant compound brings much more stability to the tire and makes the vehicle and driver always working in the safe status.



G-2/L-2 QH809



Better gripping, easy operation



Self-cleaning

Specially designed pattern angle, better mud discharge effect, improve traction and skidding.



Longer Mileage

Thanks to unique compound and excellent rubber raw materials, the tire has better mileage and be friendly with environment.

SKID STEER



SKS-1

Stronger, quicker and more utilities.



Reinforced shoulder and groove bottom

To strengthen the tread blocks and prevent irregular



The better traction

A deeper and longer lug design provides powerful traction.



Swift operation

The wider rim and enhanced bead bring better handling response and swift operation.



SKS-2

Stronger, quicker and more utilities.



Improved compound and special structure design.

Brings excellent heat-building resistant ability Improve continuous operation and increase output.



The better traction

A deeper and longer lug design provides powerful traction.



SKS-3

Stronger, quicker and more utilities.



Improved compound and special structure design

Built to get better puncture-resistance and longer lifetime.



The better traction

Blocks pattern with fuller footprints provides powerful traction.





SKS-4

Stronger, quicker and more utilities.



Fuller footprints

Provides better gripping and weight balance.



Unique compound and excellent rubber raw materials

Brings better mileage, and save cost and be friendly with environment.



SKS-7

Stronger, quicker and more utilities.



Improved compound and special structure design

Built to get better puncture-resistance and longer lifetime.



The better traction

Blocks pattern with fuller footprints provides powerful traction.



SKS-5

Stronger, quicker and more utilities.



The better traction

A deeper and longer lug design provides powerful traction.



Swift operation

The wider rim and enhanced bead bring better handling response and swift operation.



The wider lug base

Reduces stress in the shoulder area to improve maneuverability and drivability.



SKS-8

Stronger, quicker and more utilities.



Swift operation

The wider rim and enhanced bead bring better handling response and swift operation.



The wider lug base

Reduces stress in the shoulder area to improve maneuverability and drivability.



SKS-6

Stronger, quicker and more utilities.



Directional pattern

Brings better self-clean and gripping power.



The better traction

Blocks pattern with fuller footprints provides powerful traction.



SKS-9

Stronger, quicker and more utilities.



Reinforced shoulder and groove bottom

To strengthen the tread blocks and prevent irregular



The better traction

A deeper and longer lug design provides powerful traction.



Swift operation

The wider rim and enhanced bead bring better handling response and swift operation.



FORKLIFT



QH201

Stable lifting, efficient handling



Stable structure and enhanced tread rubber
Built to get better puncture-resistance and longer lifetime.



Improved compound
Brings excellent heat-building resistant ability Improve continuous operation and in crease output.



The better traction
Big stagger lugs design provides powerful traction.



QH202

Stable lifting, efficient handling



Stable structure and enhanced tread rubber
Built to get better puncture-resistance and longer lifetime.



The better traction
Big stagger lugs design provides powerful traction.



Improved compound
Brings excellent heat-building resistant ability Improve continuous operation and in crease output.



QH207

Stable lifting, efficient handling



Economical cost per hours(CPH)
Longer lifetime in medium and low working condition.



The better traction
Blocks pattern with fuller footprints provides powerful traction.



QH208

Stable lifting, efficient handling



Super deep tread
Built to get better puncture-resistance and longer lifetime.



The better traction
Big stagger lugs design provides powerful traction.

BACKHOE LOADER



QH631



All directions track to efficiency



Self-cleaning

Smooth lug shape and center line design make significant self-cleaning abilities Improve traction and drivability traction and drivability.



Prevent irregular wearing

Reinforced shoulder and groove bottom strengthen the tread blocks and prevent irregular wearing, Improve vehicle and equipment safety.



QH632



All directions track to efficiency



The better traction

Lugs on should provide powerful traction.



Self-cleaning

Smooth lug shape and center line design make significant self-cleaning abilities Improve traction and drivability.



QH633



All directions track to efficiency



The better traction

Lugs on should provide powerful traction.



Self-cleaning

Smooth lug shape and center line design make significant self-cleaning abilities Improve traction and drivability.



QH634



All directions track to efficiency



The better traction

Lugs on should provide powerful traction.



Self-cleaning

Smooth lug shape make significant self-cleaning abilities Improve traction and drivability.

AGRI-INDUSTRIAL TRACTOR



R-4 QH601

Variety utility, excellent performance



The better traction

A deeper and longer lug design provides powerful traction.



Self-cleaning

Smooth lug shape and center line design make significant self-cleaning abilities. Improve traction and drivability.



Feather-like

Feather like construction for exceptional acceleration and braking.



R-4 QH602

Variety utility, excellent performance



Self-cleaning

Smooth lug shape and center line design make significant self-cleaning abilities. Improve traction and drivability.



Reinforced shoulder and groove bottom

To strengthen the tread blocks and prevent irregular wearing, improve vehicle and equipment safety.



Super deep tread

Built to get better puncture-resistance and longer lifetime.



R-4 QH603

Variety utility, excellent performance



Reinforced shoulder and groove bottom

To strengthen the tread blocks and prevent irregular wearing, improve vehicle and equipment safety.



The better traction

A deeper and longer lug design provides powerful traction.



Swift operation

The wider rim and enhanced bead bring better handling response and swift operation.



R-4 QH604



Variety utility, excellent performance



Reinforced shoulder and groove bottom

To strengthen the tread blocks and prevent irregular wearing, improve vehicle and equipment safety.



The better traction

A deeper and longer lug design provides powerful traction.



Swift operation

The wider rim and enhanced bead bring better handling response and swift operation.



R-4 QH605



Variety utility, excellent performance



The better traction

Specially designed provides powerful traction on both soil and cement floor.



Mileage

Deeper tread and wider pattern design improves tire life and mileage.



Heat-building

Advanced compound and special structure design forms excellent heat-building resistant ability, improves continuous operation and increase output.



R-4 QH606



Variety utility, excellent performance



The better traction

A deeper and longer lug design provides powerful traction.



Mileage

Deeper tread and wider pattern design improves tire life and mileage.



Heat-building

Advanced compound and special structure design forms excellent heat-building resistant ability, improves continuous operation and increase output.



R-4 QH607



Variety utility, excellent performance



The better traction

A deeper and longer lug design provides powerful traction.



Self-cleaning

Smooth lug shape and center line design make significant self-cleaning abilities improve traction and drivability.



L-5 QH608/608L



Variety utility, excellent performance



Cut resistance

The cut-resistant compound brings much more stability to the tire and makes the vehicle and driver always working in the safe status.



Directional pattern

Brings better self-clean and gripping power.



The better traction

Blocks pattern with fuller footprints provides powerful traction.



R-4 QH609



Variety utility, excellent performance



Self-cleaning

Smooth lug shape and center line design make significant self-cleaning abilities improve traction and drivability.



Cut resistance

The cut-resistant compound brings much more stability to the tire and makes the vehicle and driver always working in the safe status.



TELEHANDLER

QH880



Variety utility, excellent performance



The wider lug base

Reduces stress in the shoulder area to improve maneuverability and drivability, designed for been used in high-reach, load-handling operations in the agriculture industry



Cut resistance

The cut-resistant compound brings much more stability to the tire and makes the vehicle and driver always working in the safe status.



The better traction

A deeper and longer lug design provides powerful traction.



WHEELED EXCAVATOR

QH107



Super deep tread

Brings better punch-resistance and wearing performance in tough working condition.



Cut resistance

The cut-resistant compound brings much more stability to the tire and makes the vehicle and driver always working in the safe status.



QH108



Super deep tread

Brings better punch-resistance and wearing performance in tough working condition.



Stable structure and enhanced tread rubber

Built to get better puncture-resistance and longer lifetime.




Loader

PATTERN	SIZE	PLY	TT/TL	OVERALL DIAMETER MM	SECTION WIDTH MM	STANDARD RIM	RELEVANT PRESSURE KPA	MAX LOADING KG
E-3L-3 QH811	20.5/70-16	16PR	TL/TL	920	340	10.00F	280	1,600
	16/70-20	16PR	TL/TL	1,067	410	13.00	350	2,600
	16/70-24	16PR	TL/TL	1,175	410	13.00	350	3,350
	14.00-24	16PR	TL/TL	1,370	385	11.00	375	4,000
	15.5-25	12PR	TL/TL	1,275	395	12.00/1.3	250	3,250
	17.5-25	16PR	TL/TL	1,350	445	14.00/1.5	475	7,300
	20.5-25	20PR	TL/TL	1,490	520	17.00/2.0	450	9,500
	23.5-25	20PR	TL/TL	1,615	595	19.00/2.5	375	10,900
	26.5-25	28PR	TL/TL	1,743	645	22.00/3.0	475	15,500
	29.5-25	28PR	TL/TL	1,850	750	25.00/3.5	425	17,500
	13.00-25	24PR	TL/TL	1,295	711	8.5	300	2,720
	16.00-25	28PR	TL/TL	1,490	430	11.25/2.0	875	12,700
	18.00-25	32PR	TL/TL	1,615	495	13.00/2.5	850	16,000
	17.5-25	16PR	TL/TL	1,350	445	14.00/1.5	475	7,300
	20.5-25	20PR	TL/TL	1,490	520	17.00/2.0	450	9,500
E-3L-3 QH812	23.5-25	20PR	TL/TL	1,615	595	19.00/2.5	375	10,900
	26.5-25	28PR	TL/TL	1,743	645	22.00/3.0	475	15,500
	17.5-25	16PR	TL/TL	1,340	420	14.00/1.5	475	7,300
L-5 QH815	20.5-25	20PR	TL/TL	1,479	500	17.00/2.0	450	9,500
	23.5-25	20PR	TL/TL	1,588	568	19.00/2.5	375	10,900
	26.5-25	28PR	TL/TL	1,758	643	22.00/3.0	475	15,500
29.5-25	28PR	TL/TL	1,868	718	25.00/3.5	425	17,500	


Grader

PATTERN	SIZE	PLY	TT/TL	OVERALL DIAMETER MM	SECTION WIDTH MM	STANDARD RIM	RELEVANT PRESSURE KPA	MAX LOADING KG
C-2L-2 QH807	15.5-25	12PR	TL	1,275	395	12.00/1.3	250	2,650
	17.5-25	12PR	TL	1,350	445	14.00/1.5	200	2,900
	17.5-25	16PR	TL	1,350	445	14.00/1.5	280	3,350
	20.5-25	16PR	TL	1,400	520	17.00/2.0	225	4,000
	13.00-24	12PR	TL	1,280	330	8.00TC	300	2,725
C-2L-2 QH808	13.00-24	16PR	TL	1,280	330	8.00TC	325	3,075
	14.00-24	12PR	TL	1,350	360	8.00TC	250	3,075
	14.00-24	16PR	TL	1,350	360	8.00TC	350	3,650
	15.5-25	12PR	TL	1,275	395	12.00/1.3	250	2,650
	17.5-25	12PR	TL	1,350	445	14.00/1.5	200	2,900
	17.5-25	16PR	TL	1,350	445	14.00/1.5	280	3,350
	20.5-25	16PR	TL	1,490	520	17.00/2.0	225	4,000
	23.5-25	16PR	TL	1,615	595	19.00/2.5	200	4,750
	14.00-24	12PR	TL	1,350	360	8.00TC	250	3,075
	C-2L-2 QH809	14.00-24	16PR	TL	1,350	360	8.00TC	350


Skid steer

PATTERN	SIZE	PLY	TT/TL	OVERALL DIAMETER MM	SECTION WIDTH MM	STANDARD RIM	RELEVANT PRESSURE KPA	MAX LOADING KG
SKS-1	10.0/75-15.3	12PR	TL	760	264	9.00	425	1,700
	11L-16	12PR	TL	838	279	8.00	480	1,960
	10-16.5	10PR	TL	779	261	8.25	520	2,135
	12-16.5	12PR	TL	830	312	9.75	550	2,865
	14-17.5	14PR	TL	922	351	10.50	550	3,875
	15-19.5	14PR	TL	1029	391	11.75	485	4,565
	10-16.5	12PR	TL	773	264	8.25	620	2,375
SKS-2	12-16.5	14PR	TL	835	307	9.75	620	3,075
	10-16.5	12PR	TL	773	264	8.25	620	2,375
SKS-3	12-16.5	14PR	TL	835	307	9.75	620	3,075
	10-16.5	12PR	TL	773	264	8.25	620	2,375
SKS-4	12-16.5	14PR	TL	835	307	9.75	620	3,075
	23/8.5-12	6PR	TL	574	213	7.00	340	800
SKS-5	27/8.5-15	6PR	TL	678	213	7.00	340	800
	27/10.5-15	6PR	TL	691	259	8.50	340	750
	10-16.5	12PR	TL	775	264	8.25	520	2,135
	12-16.5	14PR	TL	831	320	9.75	550	2,865
	10-16.5	12PR	TL	795	264	8.25	620	2,375
SKS-6	12-16.5	14PR	TL	831	315	9.75	620	3,075
	14-17.5	16PR	TL	921	349	10.50	650	4,185
	10-16.5	12PR	TL	795	264	8.25	620	2,375
SKS-7	12-16.5	14PR	TL	835	307	9.75	620	3,075
	10-16.5	10PR	TL	779	261	8.25	520	2,135
SKS-8	12-16.5	12PR	TL	830	312	9.75	550	2,865
	10-16.5	10PR	TL	779	261	8.25	520	2,135
SKS-9	10-16.5	12PR	TL	774	264	8.25	620	2,375
	12-16.5	12PR	TL	830	312	9.75	550	2,865
	12-16.5	14PR	TL	831	307	9.75	620	3,075


Forklift

PATTERN	SIZE	PLY	TT/TL	OVERALL DIAMETER MM	SECTION WIDTH MM	STANDARD RIM	RELEVANT PRESSURE KPA	MAX LOADING KG
QH201	4.00-8	10PR	TT	422	108	2.50	1,000	745
	5.00-8	10PR	TT	469	131	3.00	1,000	1,090
	6.00-9	10PR	TT	540	160	4.00	860	1,505
	6.50-10	12PR	TT	590	178	5.00	970	1,655
	7.00-12	14PR	TT	676	192	5.00	860	2,060
	7.00-15(28x9-15)	12PR	TT	750	199	5.00	860	2,300
	7.50-15	12PR	TT	798	215	6.00	790	2,600
	8.15-15(28x9-15)	14PR	TT	684	221	7.00	970	3,075
	8.25-15	14PR	TT	834	236	6.50	720	3,775
	10.00-20	16PR	TT	1,055	278	7.50	790	6,765
QH202	12.00-20	20PR	TT	1,125	315	8.50	965	8,970
	6.00-9	10PR	TT	540	160	4.00	860	1,505
QH207	6.50-10	12PR	TT	590	178	5.00	970	1,655
	7.00-12	12PR	TT	676	192	5.00	860	2,060
QH208	8.25-15(28x9-15)	14PR	TT	684	221	7.00	970	3,075
	6.00-9	10PR	TT	540	160	4.00	860	1,505
	6.50-10	12PR	TT	590	178	5.00	970	1,655
	7.00-12	12PR	TT	676	192	5.00	860	2,060
	8.25-15	14PR	TT	834	236	6.50	720	3,775


Backhoe Loader

PATTERN	SIZE	PLY	TT/TL	OVERALL DIAMETER MM	SECTION WIDTH MM	STANDARD RIM	RELEVANT PRESSURE KPA	MAX LOADING KG
QH631	11L-15	10PR	TL	813	279	8L8	360	1,060
	11L-16	12PR	TL	838	279	8L8	480	1,960
QH632	11L-16	12PR	TL	838	279	8L8	480	1,960
QH633	11L-16	12PR	TL	838	279	8L8	480	1,960
QH634	11L-16	12PR	TL	820	280	W8L	480	1,960


Agri-Industrial Tractor

PATTERN	SIZE	PLY	TT/TL	OVERALL DIAMETER MM	SECTION WIDTH MM	STANDARD RIM	RELEVANT PRESSURE KPA	MAX LOADING KG
R-4 QH601	16.9-24	12PR	TL	1,236	429	DW15	260	3,250
	16.9-28	12PR	TL	1,435	430	DW15	260	3,450
	18.4-26	12PR	TL	1,426	467	DW16	250	3,875
	17.5L-24	12PR	TL	1,241	445	DW15L	260	3,000
R-4 QH602	19.5L-24	12PR	TL	1,314	495	DW17L	230	3,450
	21L-24	12PR	TL	1,402	533	DW18A	220	3,875
	10.0/75-15.3	10PR	TL	760	264	9.0	390	1,525
	11.5/80-15.3	12PR	TL	865	290	9.0	410	2,145
	305/80-16(205/70-16)	14PR	TL	950	265	10.00	280	1,600
	15.5/80-24	12PR	TL	1,280	378	W13	300	2,900
	10.5/80-18	10PR	TL	912	274	9.0	370	1,935
R-4 QH603	12.5/80-18	12PR	TL	1,001	350	9.0	370	2,625
	12.5/80-18	12PR	TL	1,001	350	9.0	370	2,625
R-4 QH604	12.5/80-18	12PR	TL	1,015	308	9.0	370	2,650
R-4 QH605	16.9-28	14PR	TL	1,435	430	DW15	300	3,765
R-4 QH606 R-4 QH607	8.25-16	16PR	TT/TL	845	220	5.50F	730	1,800
	19.5L-24	12PR	TL	1,314	495	DW16A	230	3,455
L-5 QH608	11L-16	12PR	TL	820	280	W8L	480	1,960
	12.5/80-18	14PR	TL	1,001	350	9.0	370	2,625
	16.9-24	12PR	TL	1,309	429	W15L	260	3,240
	16.9-28	12PR	TL	1,435	430	DW15	260	3,450
L-5 QH608L R-4 QH609	19.5L-24	12PR	TL	1,314	495	DW17L	230	3,455
	19.5L-24	12PR	TL	1,314	495	DW17L	230	3,455


Telehandler

PATTERN	SIZE	PLY	TT/TL	OVERALL DIAMETER MM	SECTION WIDTH MM	STANDARD RIM	RELEVANT PRESSURE KPA	MAX LOADING KG
QH880	405/70-20	14PR	TL	1,076	407	13.0	350	3,250
	405/70-24	14PR	TL	1,178	407	13.0	350	3,550


Wheeled Excavator

PATTERN	SIZE	PLY	TT/TL	OVERALL DIAMETER MM	SECTION WIDTH MM	STANDARD RIM	RELEVANT PRESSURE KPA	MAX LOADING KG
QH107	8.25-20	14PR	TT	992	245	6.50	720	2,240
	9.00-20	14PR	TT	1,030	260	7.00	770	2,575
	10.00-20	16PR	TT	1,062	280	7.50	810	3,000
QH108	9.00-20	18PR	TT	1,020	260	7.00	760	4,000



R&D and TECHNICAL SERVICES



PD CA



Continuous Improvement

- **Continuous Improvement** is a process that includes ongoing and continuous effort to improve the standard of processes, design, producing, after-sales services, or products management. We always striving to identify opportunities for improvement and making necessary changes that will result in a better outcome;
- **Continuous Improvement** helps in fostering innovation and evolution and is considered a must for **long-term success** in our business;
- Continuous improvement is an **eternal goal of the organization**;
- The process of continuous improvement (setting goals, finding, evaluating and implementing solutions, measuring, verifying and analyzing results);
- Market demand is the premise of **Continuous Improvement**.



Quality System

- Based on the **quality system** concept of **ISO9001**, the quality control center of Qihang Tire was established.
- Following the requirements of Continual Improvement, we continuously **improve** our **products** and **quality** standards based on the needs of the market and our customers.
- Since our first ISO certification in **2014**, Qihang has obtained certification. This makes us become a **benchmark** in the industry.

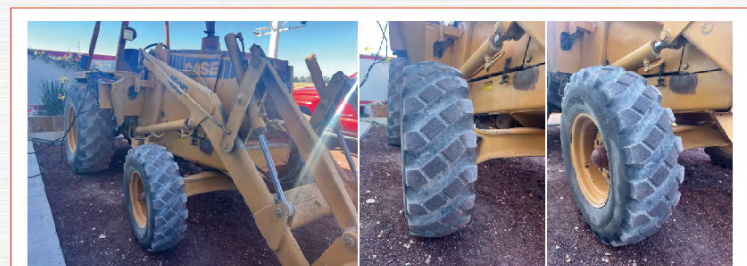




Test and Standards



Beyond Tracks



QH634

Our Brands



- At the beginning of the establishment of the enterprise, we started **FORERUNNER** and **ROADGUIDER** brands, and achieved exporting sales goals and reputations overseas;
- In 2020, we launched a brand renewal plan, redesigned the main brands, and comprehensively planned the future of brands development;
- Now **ASTROAY**, define as a global brand, pay attention to brands and marketing, to explore the broader future.

Business Map



- Manufacture center
- Service & products
- Products sales



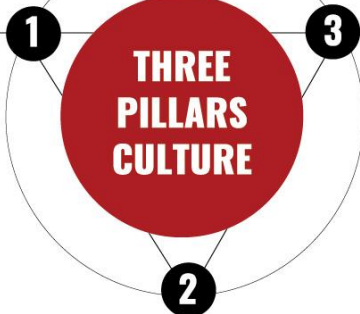
Three Pillars Culture



Partnership



Partnership has always been the key to the continuous growth of our business, and we are committed to building long-term and trusted relationships with our partners.



Communities



The community is where businesses grow and succeed. We respect the environmental, health and safety demands of our neighbors and build long-term sustainable relationships with them.

Ownership



The ownership of employees is the main reason why we have been recognized by customers and the market. Growing together with each other is always adhere to the proposition.

