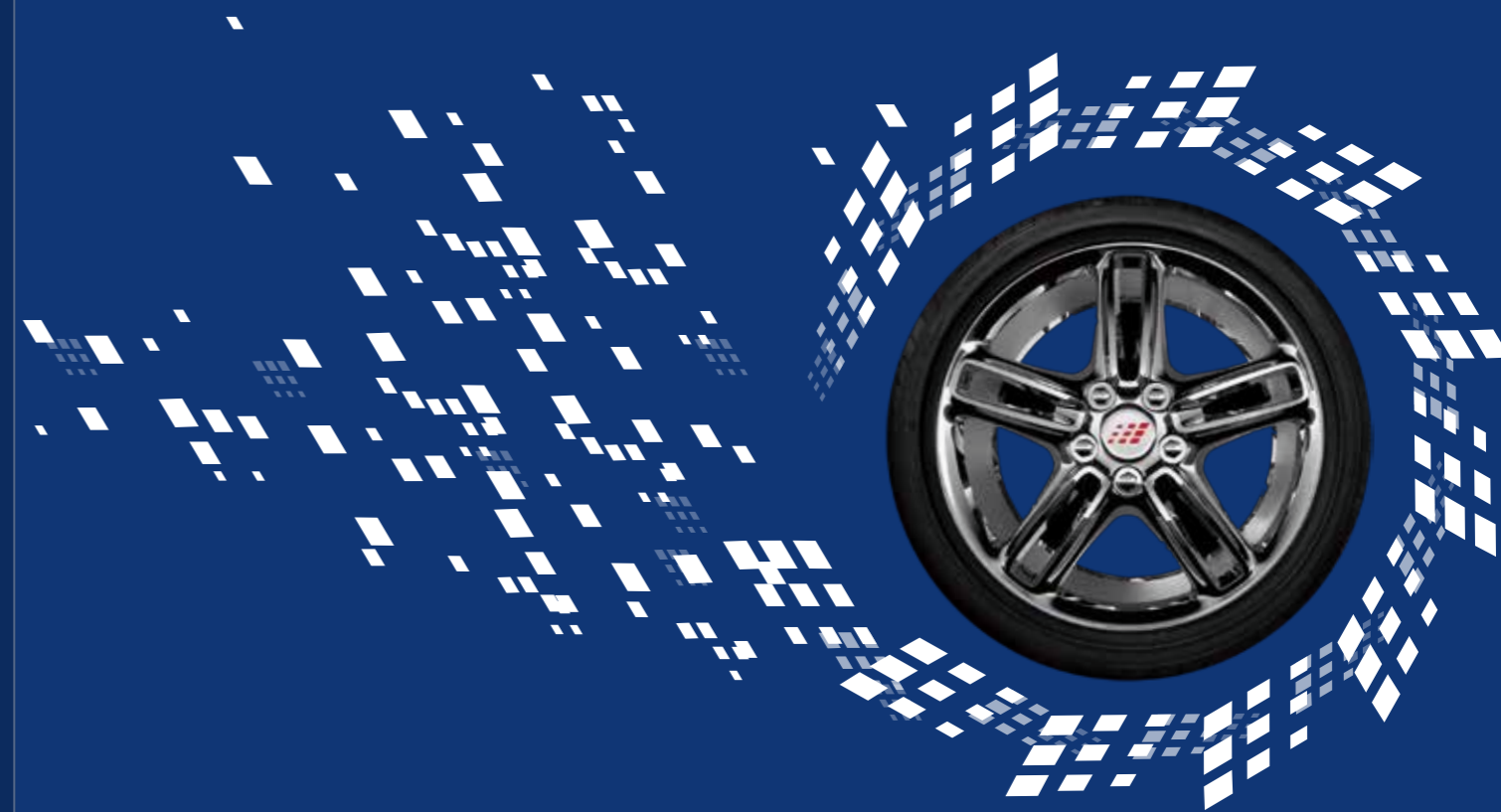


FRONWAY
ALWAYS WITH U

LONGYUE



FRONWAY

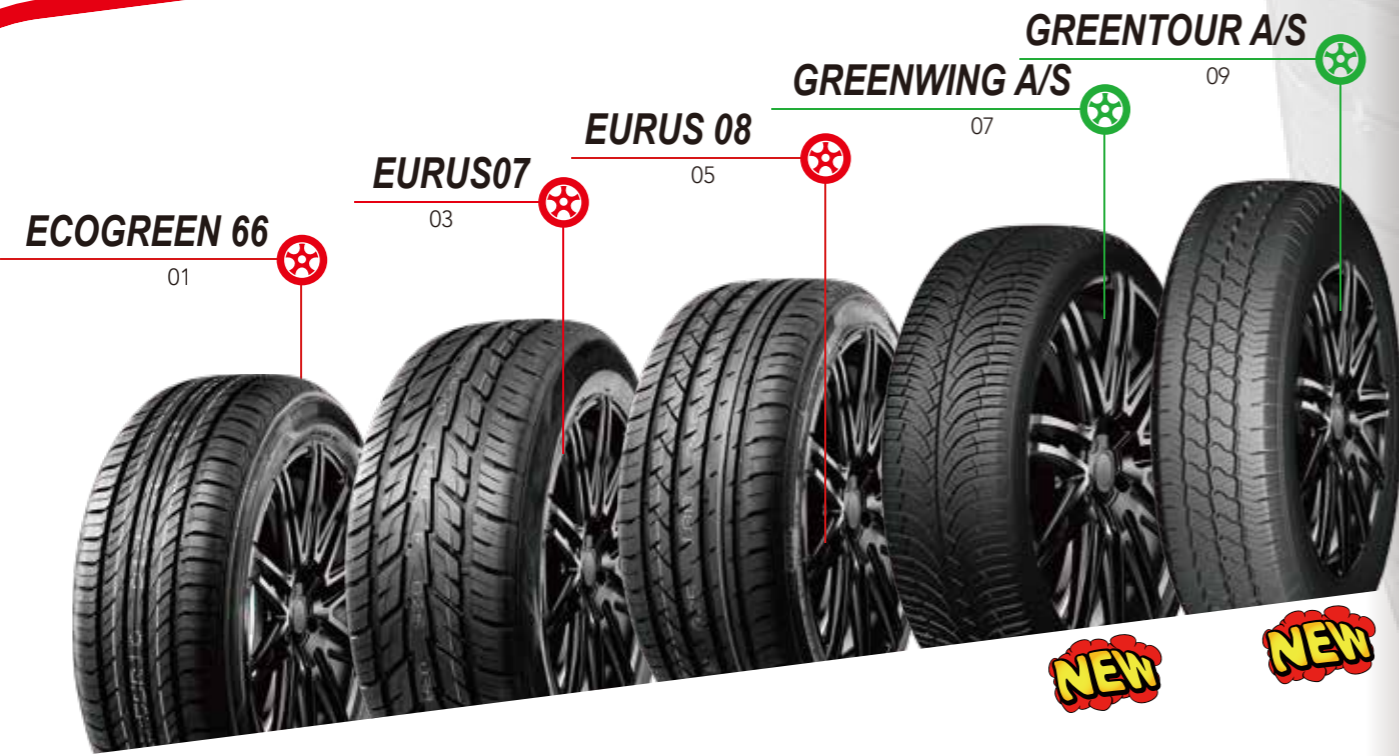
**PCR TIRE
CATALOGUE**
///

A nighttime photograph of a historic building with a series of arches, illuminated by streetlights. A canal is visible in the foreground, reflecting the lights. The scene is split vertically, with the left side showing the building and the right side showing a close-up of a car's side mirror and door panel.

FRONWAY

ALWAYS WITH U

FRONWAY TIRE FAMILY



EURUS 07

HP

UHP

VAN

AS

HT

AT

MT

WINTER



"V-shaped" pattern design



3D multi-angle "V-shaped" pattern design ensure high-speed handling and stability in sraight lines and bends.

"Y-shaped" directional pattern design



"Y-shaped" directional pattern design provides excellent horizontal or vertical drainage performance.

Shoulder design



Open shoulder design self-cleans the slush in the grooves.

Tread pattern design



Central longitudinal ribs increase the contact area with road surface, and enhance braking performance in any road conditions.

Size	LI/SI	PR	Depth (mm)	Rim	S/W (mm)	O/W (mm)	Load Index (kg)	Load Index (Lbs)	Max Pressure (Kpa/Psi)	UTQG	Sidewall			
255/55R19	111V	4	9	8J	265	763	1090	2403	340/50	400/A/A	BSW	E	E	73
275/40ZR20	106W XL	4	9	9 1/2J	278	728	950	2094	340/50	400/A/A	BSW	E	E	73
275/45R20	110V XL	4	9	9J	273	756	1060	2337	340/50	400/A/A	BSW	E	E	73
295/45ZR20	114W	4	8.2	10J	296	774	1180	2601	340/50	400/A/A	BSW	E	C	74
NEW 255/50R20	109VXL	4	8	8J	265	764	1030	2271	340/50	400/A/A	BSW	-	-	-
265/50R20	111V	4	9	8 1/2J	277	774	1090	2403	340/50	400/A/A	BSW	E	E	73
285/50R20	116V	4	8.2	9J	297	794	1250	2756	340/50	400/A/A	BSW	E	C	74
NEW 255/55R20	110VXL	4	8	8J	265	788	1060	2337	340/50	400/A/A	BSW	-	-	-
275/55R20	117V XL	4	9	8 1/2J	284	810	1285	2833	340/50	400/A/A	BSW	E	E	73
275/60R20	119H XL	4	9	8J	279	838	1360	2998	340/50	400/A/A	BSW	E	E	73
295/30ZR22	103W	4	8.2	10 1/2J	301	737	875	1929	340/50	400/A/A	BSW	E	E	74
265/35ZR22	102W XL	4	9	9 1/2J	271	745	850	1874	340/50	400/A/A	BSW	E	E	73
285/35ZR22	106W	4	8.2	10J	290	759	950	2094	340/50	400/A/A	BSW	E	E	74
265/40R22	106V XL	4	9	9 1/2J	271	771	950	2094	340/50	400/A/A	BSW	E	E	73
NEW 275/40ZR22	107WXL	4	8	9 1/2J	278	779	975	2149	340/50	400/A/A	BSW	-	-	-
285/40R22	110V	4	9	10J	290	787	1060	2337	340/50	400/A/A	BSW	E	E	74
305/40R22	114V XL	4	9	11J	313	803	1180	2601	340/50	400/A/A	BSW	E	C	74
NEW 285/45R22	114VXL	4	8	9 1/2J	285	815	1180	2601	340/50	400/A/A	BSW	-	-	-
275/25ZR24	96W	4	8.2	10J	283	748	710	1565	340/50	400/A/A	BSW	E	E	73
295/35ZR24	110W	4	8.2	10 1/2J	301	816	1060	2337	340/50	400/A/A	BSW	E	C	74
305/35ZR24	112W	4	8.2	11J	313	824	1120	2469	340/50	400/A/A	BSW	E	C	74

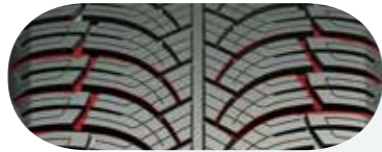
* New Developing Sizes / The Labeling Information Is Subject To Change Without Notice.

FRONWING A/S

HP
UHP
VAN
AS
HT
AT
MT
WINTER



Unique directional, streamlined and radial pattern design



Increase the ability of water breaking to reduce hydroplaning, quickly eliminate the road water to improve the wet handling.

Streamlined lateral grooves supplemented by sipe design



The streamlined lateral groove improves drainage performance, ensures driving stability for better braking performance. Increased sipes ensure the heat dissipation performance along with good grip and traction.

High rigidity shoulder design



Adjusted rigidity of the shoulder block to reach more balanced grounding pressure to handle problem of swinging and eccentric for more stable driving.

Optimized tread pattern design



The pattern groove distribution and the optimized groove angle design reduce the tread pattern noise.

Innovative Four Seasons Tread compound



Compound features high grip performance and high temperature resistance, and improve the grip under low temperature conditions.

NEW

Size	LI/SI	PR	Depth (mm)	Rim	S/W (mm)	O/W (mm)	Load Index (kg)	(Lbs)	Max Pressure (Kpa/Psi)	UTQG	Sidewall			
155/70R13	75T	4	7.3	4.5	157	548	387	853	300/44	-	BSW	E	B	69
165/70R13	79T	4	7.3	5	170	562	437	963	300/44	-	BSW	E	B	69
175/70R13	82T	4	7.3	5	177	576	475	1047	300/44	-	BSW	E	B	69
165/70R14	81T	4	7.3	5	170	588	462	1019	300/44	-	BSW	E	B	69
175/70R14	84T	4	7.3	5	177	602	500	1102	300/44	-	BSW	E	B	69
175/70R14	88T XL	4	7.3	5	177	602	560	1235	340/50	-	BSW	E	B	69
165/65R14	79T	4	7.3	5	170	570	437	963	340/50	-	BSW	E	B	69
175/65R14	82T	4	7.3	5	177	584	475	1047	300/44	-	BSW	E	B	69
185/65R14	86H	4	7.3	5.5	189	596	530	1168	300/44	-	BSW	E	B	69
185/60R14	82H	4	7.3	5.5	189	578	475	1047	300/44	-	BSW	E	B	69
175/65R15	84H	4	7.3	5	177	609	500	1102	300/44	-	BSW	E	B	69
185/65R15	92T XL	4	7.3	5.5	189	621	630	1389	340/50	-	BSW	E	B	69
195/65R15	91H	4	7.5	6	201	635	615	1356	300/44	-	BSW	E	B	69
195/65R15	95V XL	4	7.5	6	201	635	690	1521	340/50	-	BSW	E	B	69
205/65R15	94V	4	7.5	6	209	647	670	1477	300/44	-	BSW	E	B	69
185/60R15	84H	4	7.3	5.5	189	603	500	1102	300/44	-	BSW	E	B	69
185/60R15	88H XL	4	7.3	5.5	189	603	560	1235	340/50	-	BSW	E	B	69
195/60R15	88H	4	7.5	6	201	615	560	1235	300/44	-	BSW	E	B	69
185/55R15	82H	4	7.3	6	194	585	475	1047	300/44	-	BSW	E	B	69
195/55R15	85H	4	7.3	6	201	595	515	1135	300/44	-	BSW	E	B	69
195/50R15	82V	4	7.5	6	201	577	475	1047	300/44	-	BSW	E	B	69
205/60R16	96V XL	4	7.5	6	209	652	710	1565	340/50	-	BSW	E	B	69
215/60R16	99H XL	4	7.5	6.5	221	664	775	1709	340/50	-	BSW	E	B	69
195/55R16	91V XL	4	7.5	6	201	620	615	1356	340/50	-	BSW	E	B	69
205/55R16	91H	4	7.5	6.5	214	632	615	1356	300/44	-	BSW	E	B	69
205/55R16	91V	4	7.5	6.5	214	632	615	1356	300/44	-	BSW	E	B	69
205/55R16	94V XL	4	7.5	6.5	214	632	670	1477	340/50	-	BSW	E	B	69
215/55R16	97V XL	4	7.5	7	226	642	730	1609	340/50	-	BSW	E	B	69
195/45R16	84V XL	4	7.5	6.5	195	582	500	1102	340/50	-	BSW	E	B	69
225/65R17	106H XL	4	7.8	6.5	228	724	950	2094	340/50	-	BSW	E	B	69
215/60R17	96H	4	7.5	6.5	221	690	710	1565	300/44	-	BSW	E	B	69
205/55ZR17	95W XL	4	7.5	6.5	214	658	690	1521	340/50	-	BSW	E	B	69
215/55ZR17	98W XL	4	7.5	7	226	668	750	1653	340/50	-	BSW	E	B	69
205/50ZR17	93W XL	4	7.5	6.5	214	638	650	1433	340/50	-	BSW	E	B	69
215/50ZR17	95W XL	4	7.5	7	226	648	690	1521	340/50	-	BSW	E	B	69
225/50ZR17	98W XL	4	7.8	7	233	658	750	1653	340/50	-	BSW	E	B	69
225/45ZR17	94W XL	4	7.8	7.5	225	634	670	1477	340/50	-	BSW	E	B	69
235/45ZR17	97W XL	4	7.8	8	236	644	730	1609	340/50	-	BSW	E	B	69
235/60R18	107V XL	4	7.8	7	240	739	975	2149	340/50	-	BSW	E	B	69
225/55R18	98V	4	7.8	7	233	705	750	1653	300/44	-	BSW	E	B	69
235/50ZR18	101W XL	4	7.8	7.5	245	693	825	1819	340/50	-	BSW	E	B	69
245/45ZR18	100W XL	4	7.8	8	243	677	800	1764	340/50	-	BSW	E	B	69
225/40ZR18	92W XL	4	7.8	8	230	637	630	1389	340/50	-	BSW	E	B	69
235/55R19	105V XL	4	7.8	7.5	245	741	925	2039	340/50	-	BSW	E	B	69

* New Developing Sizes / The Labeling Information Is Subject To Change Without Notice.

FRONTOUR A/S

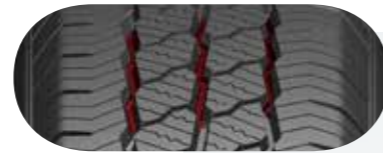


HP
UHP
VAN
AS
HT
AT
MT
WINTER



NEW

Three stepped longitudinal main groove design



Excellent drainage performance and firm grip on wet and dry roads.

Unique design of the block and the high-density sipe



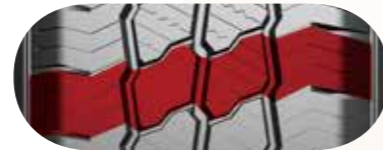
Ensure the good heat dissipation of the block with great grip and traction.

Wide shoulder block design



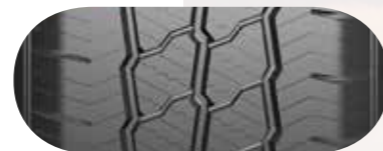
Improve the robustness of the block and the durability and load capacity of the tire; enhance the steering performance.

Low noise pattern design



Close shoulder effectively prevent the noise spread; the tuned pattern extends to the rear of the shoulders to allow for even wear and further noise elimination.

Innovative four-season tread compound



Compound features high grip performance and high temperature resistance, and improve the grip under low temperature conditions.

Size	LI/SI	PR	Depth (mm)	Rim	S/W (mm)	O/W (mm)	Load Index (kg)	Load Index (Lbs)	Max Pressure (Kpa/Psi)	UTQG	Sidewall			
175/65R14C	90/88T	6	8	5	177	584	600/560	1323/1235	375/54	-	BSW	E	C	70
175/70R14C	95/93T	6	8	5	177	602	690/650	1521/1433	375/54	-	BSW	E	C	70
195/70R15C	104/102R	8	8	6	201	655	900/850	1984/1874	450/65	-	BSW	E	C	70
205/70R15C	106/104R	8	8	6	209	669	950/900	2094/1984	450/65	-	BSW	E	C	70
215/70R15C	109/107R	8	8.5	6 1/2	221	683	1030/975	2271/2149	450/65	-	BSW	E	C	70
225/70R15C	112/110R	8	8.5	6 1/2	228	697	1120/1060	2469/2337	450/65	-	BSW	E	C	70
185/75R16C	104/102R	8	8	5	184	684	900/850	1984/1874	475/69	-	BSW	E	C	70
195/75R16C	107/105R	8	8	5 1/2	196	698	975/925	2149/2039	475/69	-	BSW	E	C	70
205/75R16C	113/111R	10	8	5.5	203	714	1150/1090	2535/2403	525/76	-	BSW	E	C	70
215/75R16C	113/111R	8	8.5	6	216	728	1150/1090	2535/2403	475/69	-	BSW	E	C	70
225/75R16C	121/120R	10	8.5	6	223	744	1450/1400	3197/3086	575/83	-	BSW	E	C	70
195/65R16C	104/102T	8	8	6	201	660	900/850	1984/1874	475/69	-	BSW	E	C	70
205/65R16C	107/105T	8	8	6	209	672	975/925	2149/2039	475/69	-	BSW	E	C	70
215/65R16C	109/107T	8	8.5	6 1/2	221	686	1030/975	2271/2149	475/69	-	BSW	E	C	70
225/65R16C	112/110R	8	8.5	6 1/2	228	698	1120/1060	2469/2337	475/69	-	BSW	E	C	70
235/65R16C	115/113R	8	8.5	7	240	712	1215/1150	2679/2535	475/69	-	BSW	E	C	70
195/60R16C	99/97H	6	8	6	201	640	775/730	1709/1609	375/54	-	BSW	E	C	70
215/60R16C	103/101T	6	8.5	6 1/2	221	664	875/825	1929/1819	375/54	-	BSW	E	C	70
215/60R17C	109/107T	8	8.5	6 1/2	221	690	1030/975	2271/2149	475/69	-	BSW	E	C	70

* New Developing Sizes / The Labeling Information Is Subject To Change Without Notice.

DURAPLUS 36

HP
UHP
VAN
AS
HT
AT
MT
WINTER



Multangular design



Multangular tread blocks design with approximate 90 degree stereo angle greatly improve tire's grip performance, increase off-road performance, and enhance vehicle's passage capacity in any extreme conditions.

Triple vertical grooves



Triple vertical groove design. 3 main straight line grooves improve drainage, self-cleaning and safety performance.

Equal lateral sipes



3D Ups and downs shoulder design improves handling performance and ensure a safe driving.

Stone ejection design



Stone removing central grooves design possess a good function of stone removing, enhance the puncture resistance and long mileages.

Size	LI/SI	PR	Depth (mm)	Rim	S/W (mm)	O/W (mm)	Load Index (kg)	(Lbs)	Max Pressure (Kpa/Psi)	UTQG	Sidewall			
185R14C	102/100R	8	9	5 1/2J	188	650	850/800	1875/1765	450/65	-	-	E	E	71
195R14C	106/104R	8	9	5 1/2J	198	666	950/900	2094/1984	450/65	-	-	E	E	71
205R14C	109/107R	8	9	6J	208	686	1030/975	2271/2150	450/65	-	-	E	E	71
195R15C	106/104R	8	9	5 1/2J	196	693	950/900	2094/1984	450/65	-	-	E	E	71
195/70R15C	104/102R	8	9	6J	201	655	900/850	1984/1875	450/65	-	-	E	E	71
225/70R15C	112/110R	8	9	6 1/2J	228	697	1120/1060	2470/2335	450/65	-	-	E	E	71
185/75R16C	104/102R	8	9	5J	184	684	900/850	1984/1875	475/69	-	-	E	E	71
195/65R16C	104/102R	8	9	6J	201	660	900/850	1984/1875	475/69	-	-	E	E	71
195/75R16C	107/105R	8	9	5 1/2J	196	698	975/925	2149/2039	475/69	-	-	E	E	71
205/65R16C	107/105R	8	9	6J	209	672	975/925	2149/2039	475/69	-	-	E	E	71
205/75R16C	110/108R	8	9	5 1/2J	203	714	1060/1000	2337/2205	475/69	-	-	E	E	71
215/75R16C	116/114R	10	9	6J	216	728	1250/1180	2756/2601	525/76	-	-	E	E	71

* New Developing Sizes / The Labeling Information Is Subject To Change Without Notice.

VANPLUS 09



HP
UHP
VAN
AS
HT
AT
MT
WINTER



Silence design



Silence design of steel sheets. 700 pieces sipes divide the "Z" type tread blocks into small pieces greatly reduce tire noise and improve driving comfort, enjoying quiet and comfortable effect that same series tires cannot bring.

Simulate Design



Simulate double "Y" tread pattern design improve grip performance without reducing tread blocks' rigidity, shorten braking distance, and improve driving safety.

Zigzag grooves



Zigzag pattern grooves design. Classic zigzag grooves provide excellent driving stability, and assure a smooth and comfortable ride.

White sidewall design



White sidewall. The white sidewall with 20mm width design is provided beautiful and dignified, suitable for car modification.

Size	LI/SI	PR	Depth (mm)	Rim	S/W (mm)	O/W (mm)	Load Index (kg)	(Lbs)	Max Pressure (Kpa/Psi)	UTQG	Sidewall			
185R14C BSW	102/100R	8	9	5 1/2	188	650	850/800	1875/1765	450/65	-	BSW	C	E	72
185R14C WSW	102/100R	8	9	5 1/2	188	650	850/800	1875/1765	450/65	-	WSW	C	E	72
195R14C BSW	106/104R	8	9	5 1/2	198	666	950/900	2094/1984	450/65	-	BSW	C	E	72
195R14C WSW	106/104R	8	9	5 1/2	198	666	950/900	2094/1984	450/65	-	WSW	C	E	72
205R14C BSW	109/107R	8	8.5	6	208	686	1030/975	2271/2150	450/65	-	BSW	C	E	72
215R14C BSW	112/110R	8	9	6	218	700	1120/1060	2469/2337	450/65	-	BSW	C	E	72
165/70R14C BSW	89/87R	6	8.5	5	170	588	580/545	1279/1202	375/54	-	BSW	C	E	72
175/65R14C BSW	90/88R	6	8.5	5	177	584	600/560	1323/1235	375/54	-	BSW	C	E	72
195R15C WSW	106/104R	8	9	5 1/2	196	693	950/900	2094/1984	450/65	-	WSW	C	E	72
195R15C BSW	106/104R	8	9	5 1/2	196	693	950/900	2094/1984	450/65	-	BSW	C	E	72
195/70R15C BSW	104/102R	8	9	6	201	655	900/850	1984/1874	450/65	-	BSW	C	E	72
215/70R15C BSW	104/101R	8	9	6 1/2	221	683	900/825	1984/1819	450/65	-	BSW	C	E	72
175/75R16C BSW	101/99R	8	9	5	177	668	825/775	1819/1705	475/69	-	BSW	C	E	72
195/75R16C BSW	107/105R	8	9	5 1/2	196	698	975/925	2149/2039	475/69	-	BSW	C	E	72
205/65R16C BSW	107/105R	8	9	6	209	672	975/925	2149/2039	475/69	-	BSW	C	E	72
215/65R16C BSW	109/107R	8	9	6 1/2	221	686	1030/975	2271/2150	475/69	-	BSW	C	E	72
225/65R16C BSW	112/110R	8	9	6 1/2	228	698	1120/1060	2469/2337	475/69	-	BSW	C	E	72
235/65R16C BSW	115/113R	8	9	7	240	712	1215/1150	2679/2535	475/69	-	BSW	C	E	72

* New Developing Sizes / The Labeling Information Is Subject To Change Without Notice.

DURAMAX 28



HP
UHP
VAN
AS
HT
AT
MT
WINTER



Zigzag grooves



Zigzag groove design. Zigzag and trailed main grooves enhance the strong traction; improve the drainage and anti-skip performance. Large slope tread grooves design provides excellent stone removing performance.

3D steel sheets



3D interlaced steel sheets design. 3D interlaced steel sheets increase the grip ability, braking force and safety of driving.

Close shoulder



Coherent close shoulder design. Enhanced rid and coherent close block design on shoulder prevents the leaning-grind caused by heavy rigidity, and remain the high-speed turning agility at the same time.

Irregular pattern



Irregular pattern and multi-pitch design brings silence and comfortable ride.

Size	LI/SI	PR	Depth (mm)	Rim	S/W (mm)	O/W (mm)	Load Index (kg)	Load Index (Lbs)	Max Pressure (Kpa/Psi)	UTQG	Sidewall	🚛	🚚	🚗
155R12LT	88/86S	8	7.5	4.50B	157	553	560/530	1235/1168	450/65	-	BSW	-	-	-
155R12C	88/86S	8	7.5	4.50B	157	553	560/530	1235/1168	450/65	-	BSW	-	-	-
155R13LT	90/88N	8	7.5	4.50B	157	578	600/560	1323/1235	450/65	-	BSW	-	-	-
165R13LT	94/93Q	8	8	4.50B	165	594	670/650	1477/1433	450/65	-	BSW	-	-	-
175R13LT	97/95Q	4	7.5	5.00B	177	610	730/690	1609/1521	450/65	-	BSW	-	-	-
175R14LT	99/97Q	4	7.5	5J	178	634	775/730	1709/1609	450/65	-	BSW	-	-	-
165/70R13	79T	4	7.5	5.00B	170	562	437	964	300/44	-	BSW	-	-	-
165/70R14	81T	4	7.5	5J	170	588	462	1019	300/44	-	BSW	-	-	-
155/70R12LT	104/102N	4	7.5	4.50B	157	523	900/850	1984/1874	650	-	BSW	-	-	-
165/70R13LT	88/86N	4	7.5	5.00B	170	562	560/530	1235/1168	375	-	BSW	-	-	-
175/70R14LT	95/93S	6	7.5	5J	177	602	690/650	1521/1433	375/54	-	BSW	-	-	-



* New Developing Sizes / The Labeling Information Is Subject To Change Without Notice.

ROADPOWER H/T

HP
UHP
VAN
AS
HT
AT
MT
WINTER



All season tread design



All season tread design

All season tread design superior comprehensive performance.

Silence design



5 pitches design with best pattern permutation effectively reduce noise and show extremely silence.

Coordinated tread pattern



Ribs pattern in central tread and coordinated tread blocks on both sides ensure excellent steering and handling performance.

High density grooves



High density grooves design. Pattern with a mass of grooves increase the contact area with road surface, enhance the drainage and wetland grip ability. Shorten the wetland braking distance.

Size	LI/SI	PR	Depth (mm)	Rim	S/W (mm)	O/W (mm)	Load Index (kg)	Load Index (Lbs)	Max Pressure (Kpa/Psi)	UTQG	Sidewall	TPMS	Rolling Noise	Rolling Noise	Rolling Noise
215/75R15	100H	4	8.7	6 J	216	703	800	1763	300/44	460/A/A	BSW	C	C	C	71
225/75R15	102H	4	8.7	6 J	223	719	850	1873	300/44	460/A/A	BSW	C	C	C	71
235/75R15	105H	4	9.3	6 1/2J	235	733	925	2039	300/44	460/A/A	BSW	C	C	C	71
265/70R15	112T	4	9.3	8 J	272	753	1120	2469	300/44	460/A/A	BSW	-	-	-	-
215/65R16	102H	4	8.7	6 1/2J	221	686	850	1873	340/50	460/A/A	BSW	C	C	C	72
215/70R16	100H	4	8.7	6 1/2J	221	708	800	1763	300/44	460/A/A	BSW	C	C	C	71
225/70R16	103H	4	9.3	6 1/2J	228	722	875	1929	300/44	460/A/A	BSW	C	C	C	71
225/75R16	104T	4	8.7	6 J	223	744	900	1984	300/44	460/A/A	BSW	C	C	C	71
235/60R16	100H	4	9.3	7 J	240	688	800	1763	300/44	460/A/A	BSW	C	C	C	71
235/70R16	106H	4	9.3	7 J	240	736	950	2094	300/44	460/A/A	BSW	C	C	C	71
245/70R16	111H	4	9.3	7 J	248	750	1090	2403	340/50	460/A/A	BSW	C	C	C	71
255/70R16	111H	4	9.3	7 1/2J	260	764	1090	2403	300/44	460/A/A	BSW	C	C	C	73
265/70R16	112T	4	9.3	8 J	272	778	1120	2469	300/44	460/A/A	BSW	-	-	-	-
265/75R16	116T	4	9.3	7 1/2J	267	804	1250	2755	300/44	460/A/A	BSW	-	-	-	-
215/60R17	100H	4	8.7	6 1/2J	221	690	800	1764	340/50	460/A/A	BSW	C	C	C	72
215/65R17	99V	4	8.7	6 1/2J	221	712	775	1708	300/44	460/A/A	BSW	C	C	C	71
235/60R17	102H	4	9.3	7 J	240	714	850	1873	300/44	460/A/A	BSW	C	C	C	71
235/65R17	108H	4	9.3	7 J	240	738	1000	2204	340/50	460/A/A	BSW	C	C	C	72
235/70R17	107H	4	9.3	7 J	240	762	975	2149	300/44	460/A/A	BSW	C	C	C	71
245/65R17	111H	4	9.3	7 J	248	750	1090	2403	340/50	460/A/A	BSW	C	C	C	71
265/65R17	112H	4	9.3	8 J	272	776	1120	2469	300/44	460/A/A	BSW	C	C	C	72
265/70R17	115H	4	9.3	8 J	272	804	1215	2678	300/44	460/A/A	BSW	C	C	C	72
235/60R18	107H	4	9.3	7 J	240	739	975	2149	340/50	460/A/A	BSW	C	C	C	72
245/60R18	105H	4	9.3	7 J	248	751	925	2039	300/44	460/A/A	BSW	C	C	C	71
255/60R18	112H	4	9.3	7 1/2J	260	763	1120	2469	340/50	460/A/A	BSW	C	C	C	73
265/60R18	114H	4	9.3	8 J	272	775	1180	2601	340/50	460/A/A	BSW	C	C	C	73
275/65R18	116H	4	9.3	8 J	279	815	1250	2755	300/44	460/A/A	BSW	C	C	C	73
255/55R19	111V	4	9.3	8 J	265	763	1090	2403	340/50	460/A/A	BSW	C	C	C	73

* New Developing Sizes / The Labeling Information Is Subject To Change Without Notice.

ROCKBLADE A/T I

HP
UHP
VAN
AS
HT
AT
MT
WINTER



All-terrain design



All-terrain design

All-terrain four season tire pattern, more strengthful tread block design.

Stone ejection design



Open tread pattern design effectively prevents stone retention, strengthen stone ejection performance.

Zigzag steel sheets



Small zigzag "3D steel sheet" design effectively deliver grips on wet road conditions, enhance driving traction.

Abrasion resistance formula



Special tread glue formula delivers a longer life.

Size	LI/SI	PR	Depth (mm)	Rim	S/W (mm)	O/W (mm)	Load Index (kg)	(Lbs)	Max Pressure (Kpa/Psi)	UTQG	Sidewall			
235/75R15	109S XL	-	10	6 1/2J	235	733	1030	2271	340/50	460/A/A	BSW	-	-	-
31X10.50R15LT	109Q	6PR	12.5	8 1/2J	268	775	1030	2270	350/50	-	BSW	-	-	-
235/70R16	106T	-	10	7J	240	736	950	2094	300/44	460/A/A	BSW	-	-	-
245/70R16	107T	4	10	7J	248	750	975	2149	300/44	460/A/A	BSW	-	-	-
265/70R16	112T	4	10	8J	272	778	1120	2469	300/44	460/A/A	BSW	-	-	-
LT225/75R16	115/112Q	10	12.5	6J	223	744	1215/1120	2680/2470	550/80	-	BSW	-	-	-
LT235/85R16	120/116Q	10	12.5	6 1/2J	235	806	1380/1260	3042/2778	550/80	-	BSW	-	-	-
LT245/75R16	120/116Q	10	12.5	7J	248	774	1380/1260	3042/2778	550/80	-	BSW	-	-	-
235/65R17	104T	4	10	7J	240	738	900	1984	300/44	460/A/A	BSW	-	-	-
245/65R17	107S	4	10	7J	248	750	975	2149	300/44	460/A/A	BSW	-	-	-
265/70R17	115S	4	10	8J	272	804	1215	2679	300/44	460/A/A	BSW	-	-	-
LT265/70R17	121/118R	10	12.5	8J	272	804	1450/1320	3195/2910	550/80	-	BSW	-	-	-

* New Developing Sizes / The Labeling Information Is Subject To Change Without Notice.

ROCKBLADE A/T II

HP
UHP
VAN
AS
HT
AT
MT
WINTER



All-terrain design



All-terrain four season tire pattern, more strengthful tread block design.

Stone ejection design



Open tread pattern design effectively prevents stone retention, strengthen stone ejection performance.

Zigzag steel sheets



Small zigzag "3D steel sheet" design effectively deliver grips on wet road conditions, enhance driving traction.

Abrasion resistance formula



Special tread glue formula delivers a longer life.

Size	LI/SI	PR	Depth (mm)	Rim	S/W (mm)	O/W (mm)	Load Index (kg)	(Lbs)	Max Pressure (Kpa/Psi)	UTQG	Sidewall	🔧	🚗	🔊
215/65R16	98T	4	9	6 1/2	221	686	750	1653	300/44	400/A/A	BSW	-	-	-
225/70R16	103T	4	9	6 1/2	228	722	875	1929	300/44	400/A/A	BSW	-	-	-
265/70R16	112T	4	10	8 J	272	778	1120	2469	300/44	460/A/A	BSW	-	-	-
LT265/75R16	123/120Q	10	12.5	7 1/2	267	804	1550/1400	3415/3085	550/80	-	BSW	-	-	-
LT285/75R16	126/123Q	10	12.5	8 J	286	834	1700/1550	3750/3415	550/80	-	BSW	-	-	-
215/65R17	99T	4	9	6 1/2	221	712	775	1708	300/44	400/A/A	BSW	-	-	-
265/65R17	112T	4	10	8 J	272	776	1120	2469	300/44	460/A/A	BSW	-	-	-
265/70R17	115S	4	10	8 J	272	804	1215	2679	300/44	460/A/A	BSW	-	-	-
LT285/70R17	121/118Q	10	12.5	8 1/2	292	832	1450/1320	3195/2910	550/80	-	BSW	-	-	-
255/60R18	112T	4	10	7 1/2	260	763	1120	2469	340/50	400/A/A	BSW	-	-	-
265/60R18	110T	4	10	8 J	272	775	1060	2336	300/44	400/A/A	BSW	-	-	-
275/65R18	116T	4	10	8 J	279	815	1250	2755	300/44	400/A/A	BSW	-	-	-
285/60R18	120S XL	4	10	8 1/2	292	799	1400	3086	340/50	460/A/A	BSW	-	-	-
305/60R18	120S	4	10	9 J	311	823	1400	3086	300/44	460/A/A	BSW	-	-	-
LT285/60R18	122/119Q	10	12.5	8 1/2	286	799	1500/1360	3305/3000	550/80	-	BSW	-	-	-
LT325/60R18	124/121Q	10	12.5	9 1/2	331	847	1600/1450	3525/3195	450/65	-	BSW	-	-	-
LT325/65R18	127/124R	10	12.5	9 1/2	331	879	1750/1600	3860/3525	450/65	-	BSW	-	-	-
265/50R20	111S XL	4	10	8 1/2	277	774	1090	2403	340/50	400/A/A	BSW	-	-	-
275/55R20	117S XL	4	10	8 1/2	284	810	1285	2833	340/50	400/A/A	BSW	-	-	-
285/55R20	119S XL	4	10	9 J	297	822	1360	2998	340/50	400/A/A	BSW	-	-	-
305/50R20	120S XL	4	10	9 1/2	316	814	1400	3086	340/50	400/A/A	BSW	-	-	-
NEW 245/70R16	107T	/	8.8	7J	248	750	975	2149	300/44	400/A/A	OWL	-	-	-
NEW 255/70R16	111T	/	8.8	7 1/2	260	764	1090	2403	300/44	400/A/A	OWL	-	-	-
NEW 275/65R17	115T	/	8.8	8J	279	790	1215	2679	300/44	400/A/A	OWL	-	-	-
NEW 245/75R16	111T	/	8.8	7J	248	774	1090	2403	300/44	400/A/A	OWL	-	-	-
NEW 225/60R17	99H	/	8.8	6 1/2	228	702	775	1708	300/44	400/A/A	OWL	-	-	-
NEW 285/65R17	116T	/	8.8	8 1/2	292	802	1250	2755	300/44	400/A/A	OWL	-	-	-
NEW 205R16C	110/108S	8PR	8.8	6J	208	736	1060/1000	2337/2205	450/65	-	OWL	-	-	-
NEW 31X10.50R15LT	109S	6PR	11.5	8 1/2	268	775	1030	2270	350/50	-	OWL	-	-	-
NEW LT215/75R15	100/97Q	6PR	11	6J	216	703	800/730	1765/1610	350/50	-	OWL	-	-	-
NEW LT235/75R15	104/101S	6PR	11	6 1/2	235	733	900/825	1985/1820	350/50	-	OWL	-	-	-
NEW LT245/70R16	113/110S	8PR	11	7J	248	750	1150/1060	2535/2335	450/65	-	OWL	-	-	-
NEW LT265/70R16	121/118S	10PR	11.5	8J	272	778	1450/1320	3195/2910	550/80	-	OWL	-	-	-
NEW LT245/75R16	120/116S	10PR	11	7J	248	774	1380/1260	3042/2778	550/80	-	OWL	-	-	-
NEW LT245/75R17	121/118S	10PR	11	7J	248	800	1450/1320	3195/2910	550/80	-	OWL	-	-	-
NEW LT245/70R17	119/116S	10PR	11	7J	248	776	1360/1250	3000/2755	550/80	-	OWL	-	-	-
NEW LT285/65R18	125/122R	10PR	11.5	8 1/2	292	827	1650/1500	3640/3305	550/80	-	OWL	-	-	-
NEW LT275/70R18	125/122Q	10PR	11.5	8J	279	843	1650/1500	3640/3305	550/80	-	OWL	-	-	-

* New Developing Sizes / The Labeling Information Is Subject To Change Without Notice.

ROCKHUNTER M/T

HP
UHP
VAN
AS
HT
AT
MT
WINTER



NEW

Tread bionic "shark" block design



Better embedded with off-road complex terrain to enhance the grip of tires.

Widen and deepen the groove design



Good heat dissipation, good self-cleaning performance and strong grip, suitable for all kinds of complex road conditions.

The shoulder pattern adopts the silt self-cleaning technology and the stone ejection groove



The sludge accumulated in the groove automatically removed in rotation and the stone ejected to ensure safe and smooth driving.

Sidewall bionic decorative design



The thickened sidewall matched with the bionic pattern to improve impact and damage resistance while meeting the individual needs of consumers.

Size	LI/SI	PR	Depth (mm)	Rim	S/W (mm)	O/W (mm)	Load Index (kg)	Load Index (Lbs)	Max Pressure (Kpa/Psi)	UTQG	Sidewall				Notes
LT215/75R15	100/97Q	6	13	6	216	703	800/730	1765/1610	350/50	-	BSW	-	-	-	POR
LT235/75R15	104/101Q	6	13	6.5	235	733	900/825	1985/1820	350/50	-	BSW	-	-	-	POR
LT215/85R16	115/112Q	10	13	6	216	772	1215/1120	2680/2470	550/80	-	OWL	-	-	-	POR
LT235/85R16	120/116Q	10	13	6.5	235	806	1380/1260	3042/2778	550/80	-	BSW	-	-	-	POR
LT225/75R16	115/112Q	10	13	6	223	744	1215/1210	2680/2470	550/80	-	OWL	-	-	-	POR
LT245/75R16	120/116Q	10	13	7	248	774	1380/1260	3042/2778	550/80	-	BSW	-	-	-	POR
LT265/75R16	119/116Q	8	14	7.5	267	804	1360/1250	3000/2755	450/65	-	OWL	-	-	-	POR
LT285/75R16	116/113Q	6	14	8	286	834	1250/1150	2755/2535	350/50	-	OWL	-	-	-	POR
LT235/70R16	110/107Q	8	13	7	240	736	1060/975	2335/2150	450/65	-	OWL	-	-	-	POR
LT245/70R16	118/115Q	10	13	7	248	750	1320/1215	2910/2680	550/80	-	OWL	-	-	-	POR
LT265/70R17	121/118Q	10	14	8	272	804	1450/1320	3195/2910	550/80	-	OWL	-	-	-	POR
LT285/70R17	121/118Q	8	14	8.5	292	832	1450/1320	3195/2910	450/65	-	OWL	-	-	-	POR
31X10.50R15LT	109Q	6	14	8.5	268	775	1030	2270	350/50	-	OWL	-	-	-	POR
32X11.50R15LT	113Q	6	14	9	290	801	1150	2535	350/50	-	OWL	-	-	-	POR
33X12.50R15LT	108Q	6	14	10	318	826	1000	2205	250/35	-	OWL	-	-	-	POR
35X12.50R15LT	113Q	6	14	10	318	877	1150	2535	250/35	-	OWL	-	-	-	POR
33X12.50R17LT	114Q	8	14	10	318	826	1180	2600	350/50	-	OWL	-	-	-	POR
35X12.50R17LT	121Q	10	14	10	318	877	1450	3195	450/65	-	OWL	-	-	-	POR
33X12.50R18LT	118Q	10	14	10	318	826	1320	2910	450/65	-	OWL	-	-	-	POR
35X12.50R18LT	118Q	8	14	10	318	877	1320	2910	350/50	-	OWL	-	-	-	POR
33X12.50R20LT	114Q	10	14	10	318	826	1180	2600	450/65	-	OWL	-	-	-	POR
35X12.50R20LT	121Q	10	14	10	318	877	1450	3195	450/65	-	OWL	-	-	-	POR

* New Developing Sizes / The Labeling Information Is Subject To Change Without Notice.

ROCKBLADE M/T I

HP
UHP
VAN
AS
HT
AT
MT
WINTER



Pyramid-shaped pattern



Pyramid-shaped pattern design improves grip and traction on muddy and sandstone roads.

Self-cleaning grooves



Slush self-cleaning and rejection groove design guarantee a safe and smooth drive.

Rigidity shoulder



The shoulder extends to sidewall tread block design greatly protect the tire from external puncture or injury.

Anti-skip design



A mass of steel sheets and grooves design provide great grip ability and driving performance on wetland.

Size	LI/SI	PR	Depth (mm)	Rim	S/W (mm)	O/W (mm)	Load Index (kg)	(Lbs)	Max Pressure (Kpa/Psi)	UTQG	Sidewall			
LT215/75R15	100/97Q	6	12.5	6 J	216	703	800/730	1765/1610	350/50	-	√	-	-	-
LT235/75R15	104/101Q	6	13.5	6 1/2J	235	733	900/825	1985/1820	350/50	-	√	-	-	-
31x10.50R15LT	109Q	6	14	8 1/2J	268	775	1030	2270	350/50	-	√	-	-	-
32X11.50R15LT	113Q	6	15.5	9 J	290	801	1150	2535	350/50	-	√	-	-	-
33X12.50R15LT	108Q	6	15	10J	318	826	1000	2205	250/35	-	√	-	-	-
LT215/85R16	115/112Q	10	12.5	6 J	216	772	1215/1120	2680/2470	550/80	-	√	-	-	-
LT225/75R16	115/112Q	10	12.5	6 J	223	744	1215/1120	2680/2470	550/80	-	√	-	-	-
LT235/85R16	120/116Q	10	13.5	6 1/2J	235	806	1380/1260	3042/2778	550/80	-	√	-	-	-
LT245/75R16	120/116Q	10	13.5	7 J	248	774	1380/1260	3042/2778	550/80	-	√	-	-	-
LT305/70R16	124/121P	10	14.5	9 J	311	834	1600/1450	3525/3195	450/65	-	√	-	-	-
LT315/75R16	127/124Q	10	14.5	8 1/2J	313	878	1750/1600	3858/3527	450/65	-	-	-	-	-
33X12.50R17LT	120Q	10	15.5	10 J	318	826	1400	3086	450/65	-	-	-	-	-

* New Developing Sizes / The Labeling Information Is Subject To Change Without Notice.

FRONTOUR 76

HP
UHP
VAN
AS
HT
AT
MT
WINTER



NEW

Widened tread pattern design



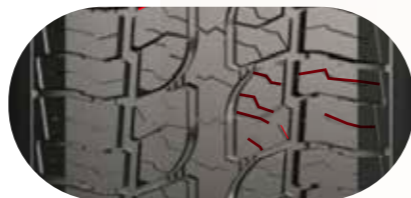
Improve grounding performance, drive flexibility and braking performance to ensure safety.

Middle groove with lateral stepped stone ejection design



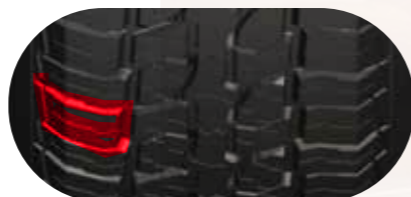
The horizontal stepped groove effectively decomposes the pumping noise source to reduce noise while improving the rigidity between the blocks; great stone ejection and mud shedding performance.

S-shaped shoulder block sipe design



Strengthen the adhesion with the road surface and improve the irregular wear; improve the robustness of the block for better durability and load capacity, as well as handling performance of the tire.

Sidewall Outlined White Letter and enhanced anti-scratch system design



Aggressive OWL and the enhanced anti-scratch sidewall to resist external damage and improve tire performance.

Size	LI/SI	PR	Depth (mm)	Rim	S/W (mm)	O/W (mm)	Load Index (kg)	Load Index (Lbs)	Max Pressure (Kpa/Psi)	UTQG	Sidewall	🚛	🏠	🔊
215/75R15LT	100/97S	6	10.5	6J	216	703	800/730	1764/1609	350/51	-	OWL	-	-	-
225/75R15LT	102/99S	6	10.5	6J	223	719	850/775	1876/1709	350/51	-	OWL	-	-	-
235/75R15LT	110/107S	8	10.5	6 1/2J	235	733	1060/975	2335/2150	450/65	-	OWL	-	-	-



* New Developing Sizes / The Labeling Information Is Subject To Change Without Notice.

ICEPOWER 96

HP
UHP
VAN
AS
HT
AT
MT
WINTER



Z grooves



*Z-groove design at the outside improve snow melt ability and ice grip.

Cuneiform pattern



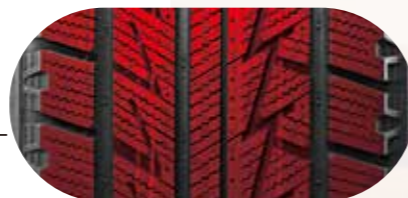
Cuneiform pattern design. Small angle cuneiform block inside provide great anti-slip ability and traction ability.

3D shoulder



3D shoulder design enlarges the contact area and removes the snow on shoulder through ladder structure in rolling period.

3D slips



Updated 3D slip design ensures the max driving grip ability when the grooves contact the ice road, and remain the rigidity of block when the grooves close. Improve the driving stability and safety.

Size	LI/SI	PR	Depth (mm)	Rim	S/W (mm)	O/W (mm)	Load Index (kg)	(Lbs)	Max Pressure (Kpa/Psi)	UTQG	Sidewall			
155/65R13	73T	4	8.4	4.50B	157	532	365	805	300/44	-	BSW	E	E	69
155/80R13	79T	4	9	4.50B	157	578	437	963	300/44	-	BSW	E	E	69
165/70R13	79T	4	9	5.00B	170	562	437	963	300/44	-	BSW	E	E	69
175/70R13	82T	4	9	5.00B	177	576	475	1047	300/44	-	BSW	E	E	69
165/60R14	75T	4	9	5J	170	554	387	853	300/44	-	BSW	E	E	69
175/65R14	82T	4	9	5J	177	584	475	1047	300/44	-	BSW	E	E	69
175/70R14	88TXL	4	8	5J	177	602	500	1102	300/44	-	BSW	E	E	69
185/60R14	82T	4	9	5 1/2J	189	578	475	1047	300/44	-	BSW	E	E	69
185/65R14	86T	4	9	5 1/2J	189	596	530	1168	300/44	-	BSW	E	E	69
185/70R14	92TXL	4	9	5 1/2J	189	616	560	1235	300/44	-	BSW	E	E	69
195/70R14	95TXL	4	8.8	6J	201	630	615	1356	300/44	-	BSW	E	E	69
185/55R15	82H	4	9	6J	194	585	475	1047	300/44	-	BSW	E	E	69
185/60R15	88HXL	4	9	5 1/2J	189	603	500	1102	300/44	-	BSW	E	E	69
185/65R15	88H	4	9	5 1/2J	189	621	560	1235	300/44	-	BSW	E	E	69
195/50R15	82H	4	9	6J	201	577	475	1047	300/44	-	BSW	E	E	69
195/55R15	85H	4	9	6J	201	595	515	1135	300/44	-	BSW	E	E	69
195/60R15	88H	4	8	6J	201	615	560	1235	300/44	-	BSW	E	E	69
195/65R15	91H	4	8.8	6J	201	635	615	1356	300/44	-	BSW	E	E	69
205/65R15	94T	4	9.5	6J	209	647	670	1477	300/44	-	BSW	E	E	69
205/55R16	91H	4	7.5	6 1/2J	214	632	615	1356	300/44	-	BSW	E	E	69
205/60R16	96HXL	4	9.5	6J	209	652	630	1389	300/44	-	BSW	E	E	69
215/60R16	94H	4	9.5	6 1/2J	221	664	690	1521	300/44	-	BSW	E	E	69
215/65R16	99HXL	4	9.5	6 1/2J	221	686	750	1653	300/44	-	BSW	E	E	69
225/55R16	98H	4	9.5	7J	233	654	690	1521	300/44	-	BSW	E	E	69
225/60R16	99HXL	4	9.5	6 1/2J	228	676	750	1653	300/44	-	BSW	E	E	69
235/70R16	98H	4	9.5	7J	240	736	950	2094	300/44	-	BSW	E	E	69
225/45R17	94H	4	9.5	7 1/2J	225	634	670	1477	340/50	-	BSW	E	E	69
225/65R17	102T	4	9.5	6 1/2J	228	724	850	1874	300/44	-	BSW	E	E	69

* New Developing Sizes / The Labeling Information Is Subject To Change Without Notice.

ICEPOWER 868

HP

UHP

VAN

AS

HT

AT

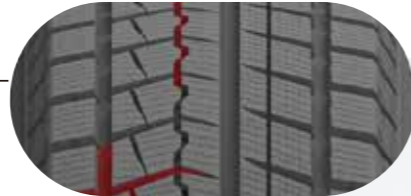
MT

WINTER



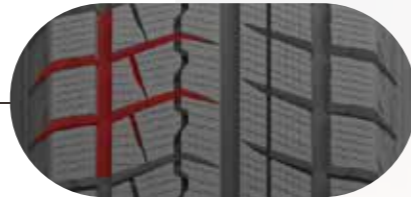
NEW

Zigzag grooves



Zigzag vertical grooves design reduces the snows in the grooves and builds the effect of meshing between tyre and snow. Ensure the riding safety through pressing and removing snow by rolling.

Steel hook design



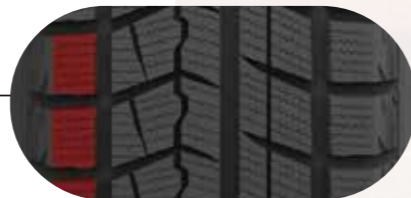
Steel hook design. Central hook-like pattern block ensure the driving horizontal rigidity of on dry and wet road. This design provides great performance on both horizontal rigidity and turning handling.

Zigzag steel sheets



Zigzag steel sheets design. 3D Densely zigzag steel sheets design increase anti-skip ability on ice road.

Flash ribs



Flash ribs design provide excellent handling and braking performance, increase the traction ability on ice road.

Size	LI/SI	PR	Depth (mm)	Rim	S/W (mm)	O/W (mm)	Load Index (kg)	(Lbs)	Max Pressure (Kpa/Psi)	UTQG	Sidewall				
155/65R13	73T	4	7.7	4.50B	157	532	365	805	300/44	-	BSW	E	C	69	
155/70R13	75T	4	7.6	4.5	157	548	387	853	300/44	-	BSW	E	C	69	
165/70R13	79T	4	7.7	5.00B	170	562	437	963	300/44	-	BSW	E	C	69	
155/65R14	75T	4	7.6	4.5	157	558	387	853	300/44	-	BSW	E	C	69	
165/65R14	79T	4	7.6	5	170	570	437	963	300/44	-	BSW	E	C	69	
165/70R14	85TXL	4	7.6	5	170	588	515	1135	340/50	-	BSW	E	C	69	
175/70R14	88T XL	4	8	5 J	177	602	500	1102	300/44	-	BSW	E	C	69	
185/60R14	82T	4	8	5 1/2 J	189	578	475	1047	300/44	-	BSW	E	C	69	
185/65R14	86T	4	8	5 1/2 J	189	596	530	1168	300/44	-	BSW	E	C	69	
195/60R14	86H	4	8.3	6 J	201	590	530	1168	300/44	-	BSW	E	C	69	
175/65R15	84T	4	7.6	5	177	609	500	1102	300/44	-	BSW	E	C	69	
185/60R15	88H	4	8	5 1/2 J	189	603	500	1102	300/44	-	BSW	E	C	69	
185/65R15	88H	4	8	5 1/2 J	189	621	560	1235	300/44	-	BSW	E	C	69	
195/55R15	85H	4	8.3	6 J	201	595	515	1135	300/44	-	BSW	E	C	69	
195/60R15	88H	4	8.3	6 J	201	615	560	1235	300/44	-	BSW	E	C	69	
195/65R15	91T	4	8.3	6 J	201	635	615	1521	300/44	-	BSW	E	C	69	
195/65R15	95TXL	4	8.3	6	201	635	690	1521	340/50	-	BSW	E	C	69	
205/65R15	94H	4	8.3	6 J	209	647	670	1477	300/44	-	BSW	E	C	69	
215/70R15	98T	4	8	6.5	221	683	750	1653	300/44	-	BSW	E	C	69	
195/55R16	91HXL	4	8	6	201	620	615	1356	340/50	-	BSW	E	C	69	
205/55R16	91H	4	8.3	6 1/2 J	214	632	615	1477	300/44	-	BSW	E	C	69	
205/55R16	94HXL	4	8.3	6.5	214	632	670	1477	340/50	-	BSW	E	C	69	
205/60R16	96H XL	4	8.3	6 J	209	652	630	1389	300/44	-	BSW	E	C	69	
215/55R16	97HXL	4	8	7	226	642	730	1609	340/50	-	BSW	E	C	69	
215/60R16	99H	4	8.3	6 1/2 J	221	664	775	1709	340/50	-	BSW	E	C	69	
215/70R16	100T	4	8	6.5	221	708	800	1764	300/44	-	BSW	E	C	69	
225/70R16	107TXL	4	8	6.5	228	722	975	2149	340/50	-	BSW	E	C	69	
245/70R16	111TXL	4	8	7	248	750	1090	2403	340/50	-	BSW	E	C	69	
265/70R16	112T	4	8	8	272	778	1120	2469	300/44	-	BSW	E	C	69	
205/50R17	93HXL	4	8	6.5	214	638	650	1433	340/50	-	BSW	E	C	69	
215/50R17	95HXL	4	8	7	226	648	690	1521	340/50	-	BSW	E	C	69	
215/55R17	98HXL	4	8.3	7	226	668	750	1653	340/50	-	BSW	E	C	69	
225/50R17	98HXL	4	8	7	233	658	750	1653	340/50	-	BSW	E	C	69	
225/55R17	101HXL	4	8.3	7	233	680	825	1819	340/50	-	BSW	E	C	69	
235/45R17	97HXL	4	8	8	236	644	730	1609	340/50	-	BSW	E	C	69	
235/55R17	103HXL	4	8	7.5	245	690	875	1929	340/50	-	BSW	E	C	69	
235/65R17	108TXL	4	8	7	240	738	1000	2205	340/50	-	BSW	E	C	69	
265/65R17	112T	4	8	8	272	776	1120	2469	300/44	-	BSW	E	C	69	
265/70R17	115T	4	8	8	272	804	1215	2679	300/44	-	BSW	E	C	69	
225/40R18	92HXL	4	8	8	230	637	630	1389	340/50	-	BSW	E	C	69	
225/45R18	95HXL	4	8	7.5	225	659	690	1521	340/50	-	BSW	E	C	69	
235/45R18	98HXL	4	8	8	236	669	750	1653	340/50	-	BSW	E	C	69	
235/60R18	107HXL	4	8	7	240	739	975	2149	340/50	-	BSW	E	C	69	
245/45R18	100HXL	4	8	8	243	677	800	1764	340/50	-	BSW	E	C	69	
255/55R18	109HXL	4	8	8	265	737	1030	2271	340/50	-	BSW	E	C	69	
285/60R18	116H	4	8	8.5	292	799	1250	2756	300/44	-	BSW	E	C	69	
275/45R20	110HXL	4	8	9	273	756	1060	2337	340/50	-	BSW	E	C	69	

* New Developing Sizes / The Labeling Information Is Subject To Change Without Notice.

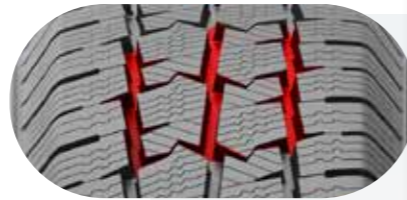
ICEPOWER 989

HP
UHP
VAN
AS
HT
AT
MT
WINTER



NEW

The tacit connection of the longitudinal and transverse grooves complemented by a fine and tortuous sipe design



Effective elimination of snow and better grip to greatly increase the adhesion to ice and snow, eliminate hydroplaning and improve mud & snow shedding and self-cleaning performance.

Combination design of shoulder blocks and special sipe



Effectively equalize the rigidity of the block to ensure excellent turning performance and handling; combined design of the block and the sipe to significantly increase the number of lateral grooves without affecting the overall rigidity of the block. more and further balanced contact area on the snow and ice road for better braking performance.

Special compound design for winter pattern



Improve the traction and grip of winter tires on snow and ice.

Optimized contour design and material structure distribution



Provides smooth operation and even pressure distribution.

Size	LI/SI	PR	Depth (mm)	Rim	S/W (mm)	O/W (mm)	Load Index (kg)	Load Index (Lbs)	Max Pressure (Kpa/Psi)	UTQG	Sidewall			
195/70R15C	104/102R	8	8.8	6	201	655	900/850	1984/1874	450/65	-	BSW	E	C	69
215/70R15C	109/107R	8	8.8	6 1/2	221	683	1030/975	2271/2149	450/65	-	BSW	E	C	69
225/70R15C	112/110R	8	8.8	6 1/2	228	697	1120/1060	2469/2337	450/65	-	BSW	E	C	69
215/65R15C	104/102R	6	8.8	6 1/2	221	661	900/850	1984/1874	375/54	-	BSW	E	C	69
185/75R16C	104/102R	8	8.8	5	184	684	900/850	1984/1874	475/69	-	BSW	E	C	69
195/65R16C	104/102R	8	8.8	6	201	660	900/850	1984/1874	475/69	-	BSW	E	C	69
195/75R16C	107/105R	8	8.8	5 1/2	196	698	975/925	2149/2039	475/69	-	BSW	E	C	69
205/65R16C	107/105R	8	8.8	6	209	672	975/925	2149/2039	475/69	-	BSW	E	C	69
215/65R16C	109/107R	8	8.8	6 1/2	221	686	1030/975	2271/2149	475/69	-	BSW	E	C	69
215/75R16C	113/111R	8	8.8	6	216	728	1150/1090	2535/2403	475/69	-	BSW	E	C	69
225/65R16C	112/110R	8	8.8	6 1/2	228	698	1120/1060	2469/2337	475/69	-	BSW	E	C	69
235/65R16C	115/113R	8	8.8	7	240	712	1215/1150	2679/2535	475/69	-	BSW	E	C	69



* New Developing Sizes / The Labeling Information Is Subject To Change Without Notice.